



Tire Technical Specs Bulletin – 991 Class

DATE: January 1, 2026

To: Porsche Sprint Trophy – 991 Class Competitors

CC: PCA, PMNA, TSP

RE: 2026 Tire Technical Specs – 991 Class

The ADVAN A005 dry tire and A006 wet tire are utilized in the Porsche Sprint Trophy competition. Detailed technical specifications for both the A005 and A006 are provided below. **For existing Yokohama customers, please note the updated part number for the 991 GT3 Cup class rear dry tire. This is the same tire used previously but now features RFID tags integrated into the sidewall.**



ADVAN A005 ADVAN A006

991 – Dry

Axle	Part #	Article	Size	Tread	Compound	Overall Diameter	Tread Width	Section Width	Rec. Rim Width
Front	150100704	N2782	280/650R18	A005C	A60	649	287	303	11
Rear	150113404	N3382	330/710R18	A005G	A80	706	338	356	13

991 – Wet

Axle	Part #	Article	Size	Tread	Compound	Overall Diameter	Tread Width	Section Width	Rec. Rim Width
Front	150100712	N2923	280/650R18	A006F	W60	651	278	301	11
Rear	150100713	N2924	320/710R18	A006F	W60	709	333	353	13

991 - Dry Tires

Axle	Specification	Sebring	Lime Rock	Watkins Glen	Road America
Front	Max Camber	-4.5°	-4.5°	-4.5°	-4.5°
	Min Cold Pressure	18 psi	18 psi	18 psi	18 psi
Rear	Max Camber	-3.5°	-3.5°	-3.5°	-3.5°
	Min Cold Pressure	17 psi	17 psi	17 psi	17 psi



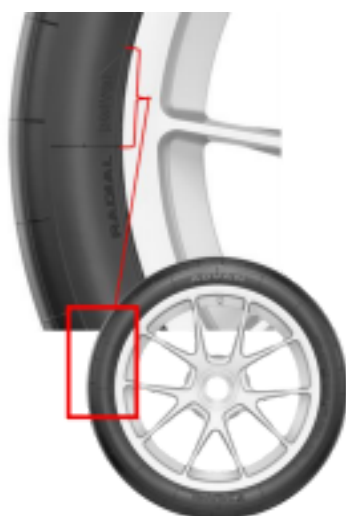
991 - Wet Tires

Axle	Specification	Sebring	Lime Rock	Watkins Glen	Road America
Front	Max Camber	-4.5°	-4.5°	-4.5°	-4.5°
	Min Cold Pressure	23 psi	23 psi	23 psi	23 psi
Rear	Max Camber	-3.5°	-3.5°	-3.5°	-3.5°
	Min Cold Pressure	22 psi	22 psi	22 psi	22 psi

Tire Mounting Orientation – Dry Tires

The **front** dry tire is directional, it must be mounted on the car with directional arrows pointing toward the center of the vehicle. This ensures the tire rolls across its tread splice under hard acceleration and heavy braking.

The **rear** RFID dry tire is not directional; there are no direction of rotation arrows on the tire sidewall. Each dry RFID tire must be mounted with the yellow FIA barcode and RFID tag facing outboard. Both FIA barcode and RFID tag marking can be found on the sidewall, see below. Correct mounting ensures RFID tag information is presented outward while passing through pitlane readers (if applicable).



**A005 Dry
Tire - Front**

A005 RFID Dry Tire - Rear





Tire Mounting Orientation – Wet Tires

A006 rain tires must be mounted with directional arrows pointing to the front of the car. There are no RFID tags in rain tires.

A006 Wet Tire



Sincerely,

Tricia Wall

Tricia Wall
Motorsports Senior Manager
Yokohama Tire Corporation
patricia.wall@yokohamatire.com